

AF

Advisors



Top 10 Rankings

Mutual Funds available to the Dutch retail market

April 2016

Content

- Methodology – Top 10 Ranking 3
- Methodology – Asset Class Overview 4
- Top 10 Asset Class Overview & Top 10 Ranking 7
 - Global Large Cap Equity
 - Global Emerging Markets Large Cap Equity
 - US Large Cap Equity
 - European Large Cap Equity
 - European Small & Mid Cap Equity
 - Asia-Pacific ex Japan Large Cap Equity
 - Japan Large Cap Equity
 - European Government Bonds
 - European Corporate Bonds
 - Global High Yield Bonds
- Introducing AF Advisors 28
- Disclaimer 30



Methodology – Top 10 Ranking

Screening

- The screening starts by selecting the range of funds registered for sale in The Netherlands for the specific asset class
- In order for a fund to make it through the screening, the eligibility of each fund in an asset class is determined based on pre-defined criteria. These criteria depend on the asset class and are shown on the Top 10 ranking slides.

Ranking

- The Top 10 ranking is based on an analysis taking into account several qualitative and quantitative factors. These include:
 - 3, 5, and 10 year gross returns
 - 3, 5, and 10 year Sharpe and Sortino ratio
 - Total expense ratio
 - Local support
 - Availability and completeness of information
 - The fund's consistency in our rankings
 - The consistency of the fund managers
 - Cash flows of the fund



Methodology – Asset Class Overview

For each asset class we present an overview of some key data to provide better insights in the asset class. On the left we show information on the number of funds in the asset class, the concentration of the asset class and the average cost level.

We also show the benchmark that we use in our analyses of the asset class. In addition, we provide four different graphs:

- Asset class size & cash flow
- Return dispersion
- Volatility dispersion
- Share of index funds



Methodology – Asset Class Overview

Asset class benchmark

MSCI World NR USD

Funds

Total number of funds
3,175 (▲ 2.1%)

Number of funds registered for
sale in the Netherlands
432 (13.6% of total) (▲ 0.7%)

Number of funds domiciled in the
Netherlands
44 (1.4% of total) (▲ 2.1%)

Concentration

Top 10 largest asset managers %
of total AuM
46.9% (▼ 1.1%)

Top 10% largest funds % of total
AuM
79.4% (▲ 0.8%)

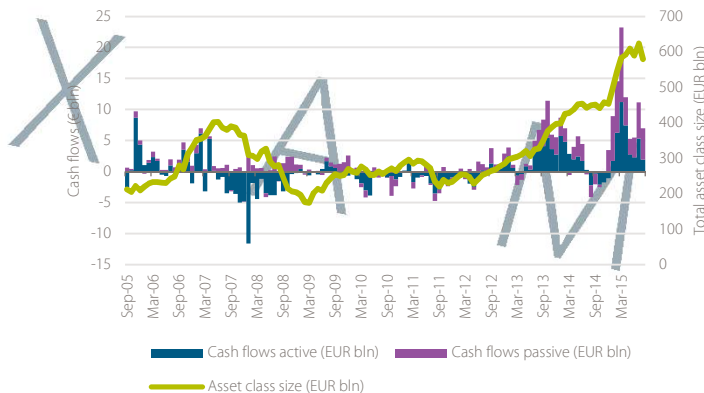
Average fund size (EUR mln)
703.5 (▲ 0.3%)

Costs

Average total expense ratio (TER)
1.26% (▼ 0.02%)

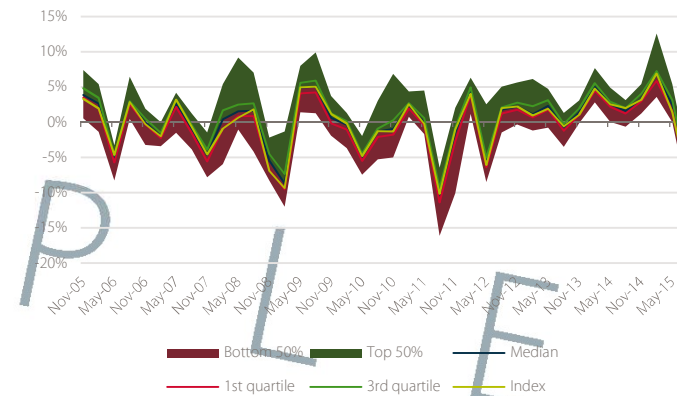
Average management fee
0.92% (▲ 0.03%)

Asset class size & cashflows



We show the historical development of the total amount invested in the asset class and the monthly cash flows, split for active and passive funds, based on all available funds in the asset class. Cash flows and asset class size are measured in EUR bln. The cash flows are plotted as a bar chart on the left axis, whereas the asset class size is represented by the yellow line which is plotted on the right axis.

Return dispersion



The return dispersion shows the range of returns achieved in a specific month, and gives an indication of when certain funds were able to generate more or less outperformance compared to their peers. To keep the graph readable, we show the monthly return per the end of each quarter. The black line shows the average return, whereas the red and green lines show the 1st and 3rd quartile, respectively. The yellow line represents the asset class benchmark. The green area shows the dispersion of the 50% of funds which had returns above the average, whereas the red area shows the same for funds below the average.



Methodology – Asset Class Overview

Asset class benchmark
MSCI World NR USD

Funds

Total number of funds
3,175 (▲ 2.1%)

Number of funds registered for sale in the Netherlands
432 (13.6% of total) (▲ 0.7%)

Number of funds domiciled in the Netherlands
44 (1.4% of total) (▲ 2.1%)

Concentration

Top 10 largest asset managers % of total AuM
46.9% (▼ 1.1%)

Top 10% largest funds % of total AuM
79.4% (▲ 0.8%)

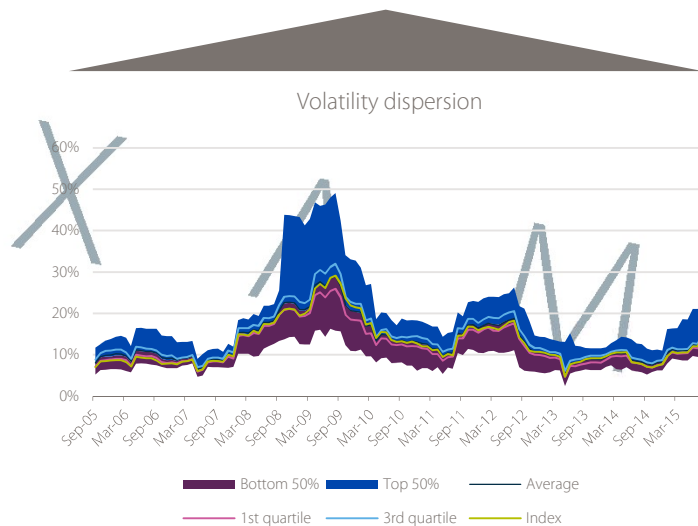
Average fund size (EUR mln)
703.5 (▲ 0.3%)

Costs

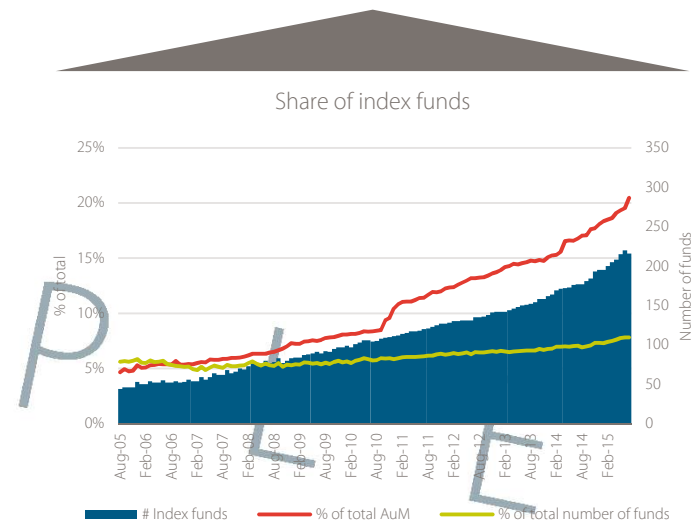
Average total expense ratio (TER)
1.26% (▼ 0.02%)

Average management fee
0.92% (▲ 0.03%)

The volatility dispersion shows the range of 1-year rolling standard deviations, and gives an indication of how volatile the market was. The black line shows the average standard deviation, whereas the purple and blue lines show the 1st and 3rd quartile, respectively. The blue area shows the dispersion of the 50% of funds which had standard deviations above the average, whereas the purple area shows the same for funds below the average. In addition, the yellow line shows the standard deviation for the asset class benchmark.



In this graph we show the share of index funds as compared to active funds. We show the total number of index funds in the asset class (represented by the blue bars, right axis). The red line shows which percentage of the total assets from the asset class are invested through index funds. The yellow line shows which percentage of the total number of funds available in the asset class is an index fund.



AF

Advisors

Top 10 Asset Class Overview & Top 10 Ranking



Global Large Cap Equity

Asset class

AF

Advisors

Asset class benchmark

MSCI World NR USD

Funds

Total number of funds
3,329 (▲ 1.6%)

Number of funds registered for sale in the Netherlands
460 (13.8% of total) (▲ 0.8%)

Number of funds domiciled in the Netherlands
47 (1.4% of total) (■ 0.0%)

Concentration

Top 10 largest asset managers % of total AuM
51.3% (▲ 1.1%)

Top 10% largest funds % of total AuM
79.6% (▲ 0.3%)

Average fund size (EUR mln)
626 (▼ 4.3%)

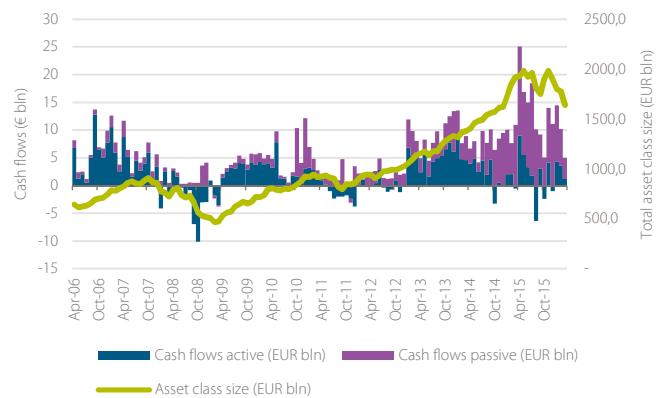
Costs

Average total expense ratio (TER)
1.21% (▼ 0.5%)

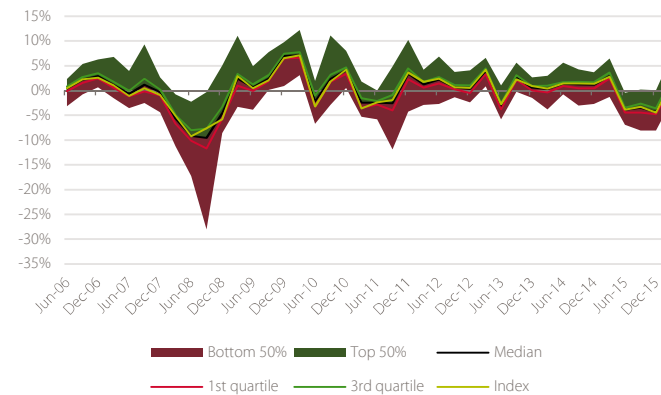
Average management fee
0.92% (▼ 0.02%)

Data as of 31/03/2016

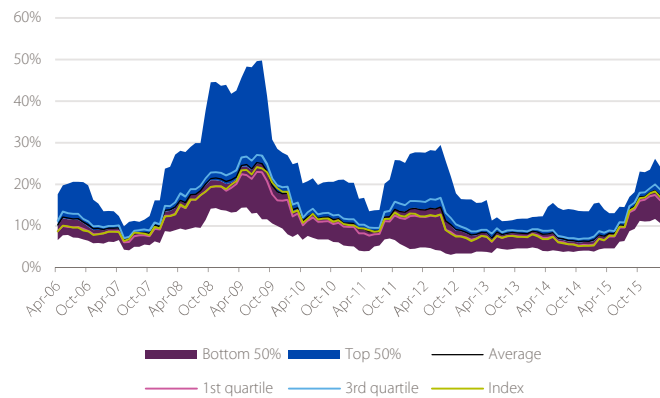
Asset class size & cashflows



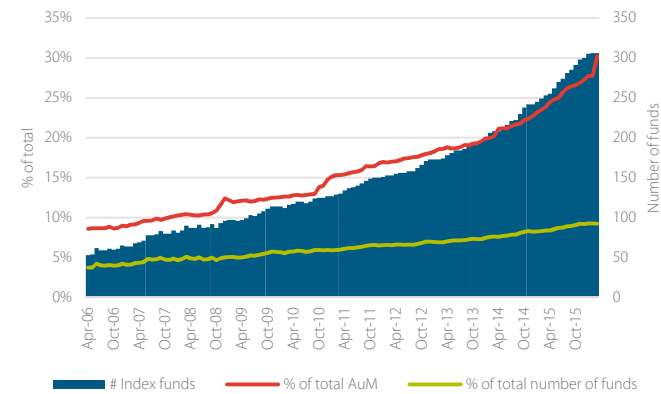
Return dispersion



Volatility dispersion



Share of index funds



Global Large Cap Equity

Top 10

Current	Previous	Fund Name	Branding Name	ISIN	Gross Return (Ann.)		Standard Deviation	Historical ranking				
					3 Yr	5 Yr	3 Yr	# Rankings*	Q4 '15	Q3 '15	Q2 '15	Q1 '15
1	4	SSgA Gbl Managed Volatility Eqty I	State Street	LU0450104814	15.55	16.41	10.43	3 / 20	4	5	-	-
2	3	ASN Duurzaam Aandelenfonds	ASN Bank	NL0000441301	17.05	15.11	13.57	12 / 20	3	1	2	1
3	1	MS INVF Global Opportunity I	Morgan Stanley	LU0834154790	26.22	17.56	15.91	3 / 20	1	4	-	-
4	5	GS Gbl CORE Equity R Snap Acc	Goldman Sachs	LU0830625926	17.01	14.23	12.47	2 / 20	5	-	-	-
5	-	Robeco Global Conservative Equities CEUR	Robeco	LU0891727132	12.75	-	9.92	1 / 20	-	-	-	-
6	-	AB SICAV I Low Volatility Eq I USD Acc	AB (AllianceBernstein)	LU0861579349	16.35	-	10.57	1 / 20	-	-	-	-
7	2	Invesco Global Structured Eq C	Invesco	LU0267985157	15.20	16.15	13.03	3 / 20	2	3	-	-
8	9	Fidelity Global Demographics Y-Acc-USD	Fidelity	LU0528228231	14.94	-	12.76	2 / 20	9	-	-	-
9	-	Fidelity Global Dividend Y-Acc-USD	Fidelity	LU0605515963	14.42	-	10.69	1 / 20	-	-	-	-
10	7	Robeco BP Global Premium Eq C EUR	Robeco	LU0940004830	14.15	14.20	11.86	12 / 20	7	2	3	3

Eligibility criteria asset class

Investment strategy

- Minimum 70% invested in Global Developed Equity
- Large Cap or All Cap Equity strategy
- No exclusions of or focus on specific sectors or countries

Investment vehicle

- ETFs and Open-ended investment funds (Publicly offered)
- EUR or USD shareclass
- Minimum of EUR 50 million AuM
- Retail shareclass

Trackrecord

- Minimum 3 year trackrecord

Data

- Public reporting of fund data

* The '# Rankings' column indicates the number of AF Advisors Top 10 Mutual Fund Rankings in which the fund received a top-10 ranking.



Global Emerging Markets Large Cap Equity

Asset class

AF
Advisors

Asset class benchmark

MSCI Emerging Markets NR USD

Funds

Total number of funds
1,768 (▲ 0.1%)

Number of funds registered for
sale in the Netherlands
303 (17.1% of total) (▼ 0.2%)

Number of funds domiciled in the
Netherlands
12 (0.6% of total) (▼ 0.1%)

Concentration

Top 10 largest asset managers %
of total AuM
51% (▼ 0.7%)

Top 10% largest funds % of total
AuM
80.7% (▼ 0.6%)

Average fund size (EUR mln)
331 (▲ 1.2%)

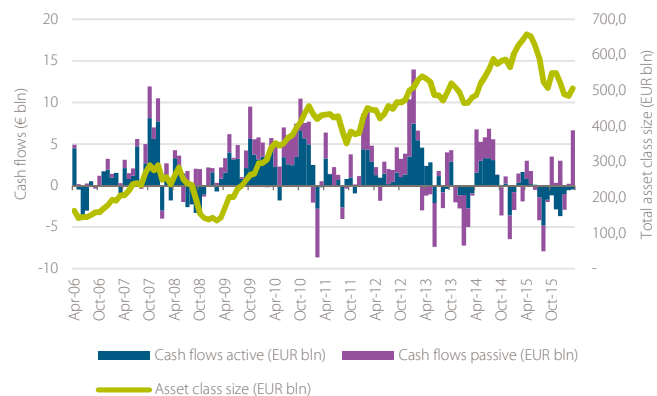
Costs

Average total expense ratio (TER)
1.40% (▼ 0.03%)

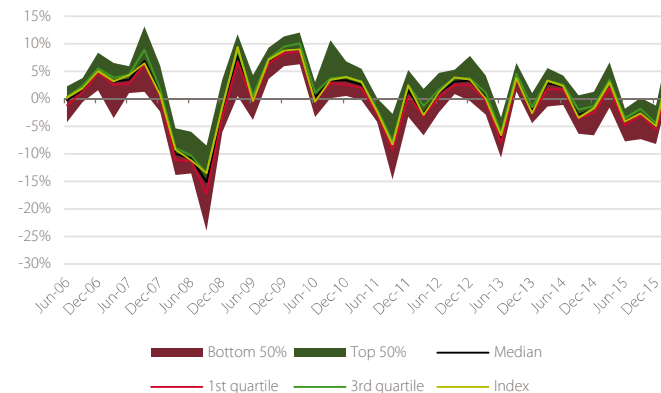
Average management fee
1.04% (▼ 0.05%)

Data as of 31/03/2016

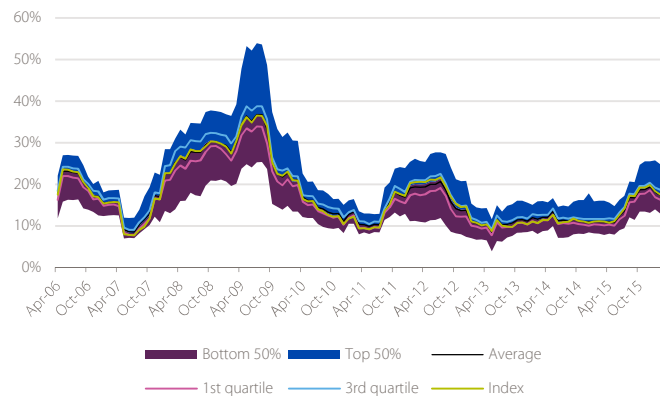
Asset class size & cashflows



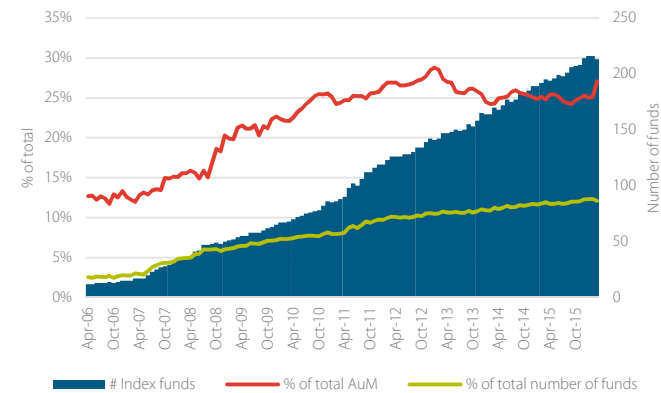
Return dispersion



Volatility dispersion



Share of index funds



Global Emerging Markets Large Cap Equity

Top 10

Current	Previous	Fund Name	Branding Name	ISIN	Gross Return (Ann.)		Standard Deviation	Historical ranking				
					3 Yr	5 Yr	3 Yr	# Rankings*	Q4 '15	Q3 '15	Q2 '15	Q1 '15
1	1	Fidelity Emerging Markets Y-Acc-USD	Fidelity	LU0346390940	6.63	6.27	14.78	8 / 20	1	4	7	-
2	2	Stewart Invs Gbl EmMkts Stnty B Acc EUR	First State	GB00B64TSC26	5.19	9.40	12.92	16 / 20	2	7	3	1
3	3	Stewart Investors Gbl EM Ldrs B Acc EUR	First State	GB00B2PDTV12	4.85	9.09	13.75	16 / 20	3	1	1	5
4	-	BMO LGM Gbl Emerg Mkts Gr and Inc B Acc	BMO	IE00B3BNMF79	2.09	4.52	13.76	1 / 20	-	-	-	-
5	-	Robeco Emerging Conservative Eqs F EUR	Robeco	LU0940007007	1.74	6.35	12.89	8 / 20	-	3	6	4
6	8	Hermes Global Emerging Markets F USD Acc	Hermes Fund Managers	IE00B3DJ5Q52	7.74	5.41	14.73	4 / 20	8	8	8	-
7	-	GS Gr & Emerg Mkts Broad Eq R Acc	Goldman Sachs	LU0830622741	6.11	-	15.59	1 / 20	-	-	-	-
8	-	iShares MSCI Emerg Mkts Minimum Volatil	iShares	IE00B8KGV557	1.16	-	12.61	1 / 20	-	-	-	-
9	5	Comgest Growth Emerging Mkts I EUR Acc	Comgest	IE00B4VRKF23	6.25	4.01	15.35	8 / 20	5	5	5	9
10	10	Magellan I	Comgest	FR0011238344	6.10	4.46	15.48	8 / 20	10	-	4	-

Eligibility criteria asset class

Investment strategy

- Minimum 70% invested in Global Emerging Markets Equity
- Large Cap or All Cap Equity strategy
- No exclusions of or focus on specific sectors or countries

Investment vehicle

- ETFs and Open-ended investment funds (Publicly offered)
- EUR or USD shareclass
- Minimum of EUR 50 million AuM
- Retail shareclass

Trackrecord

- Minimum 3 year trackrecord

Data

- Public reporting of fund data

* The '# Rankings' column indicates the number of AF Advisors Top 10 Mutual Fund Rankings in which the fund received a top-10 ranking.



US Large Cap Equity

Asset class

AF

Advisors

Asset class benchmark

S&P500 NR USD

Funds

Total number of funds
3,053 (■ 0.0%)

Number of funds registered for
sale in the Netherlands
277 (8.9% of total) (■ 0.0%)

Number of funds domiciled in the
Netherlands
15 (0.5% of total) (■ 0.0%)

Concentration

Top 10 largest asset managers %
of total AuM
65.8% (▲ 1.2%)

Top 10% largest funds % of total
AuM
82.4% (▼ 0.3%)

Average fund size (EUR mln)
1,521 (▼ 5.8%)

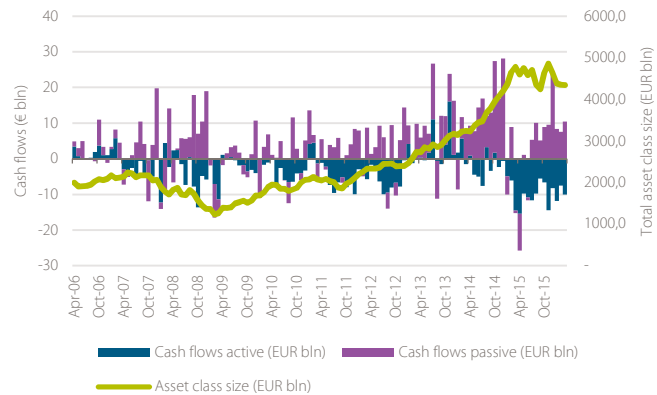
Costs

Average total expense ratio (TER)
1.05% (▼ 0.14%)

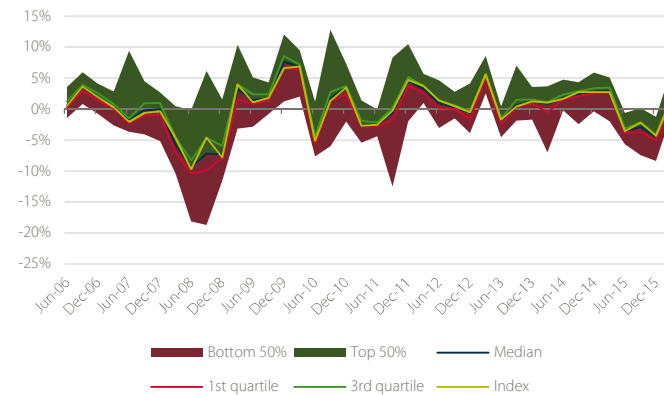
Average management fee
0.78% (▼ 0.09%)

Data as of 31/03/2016

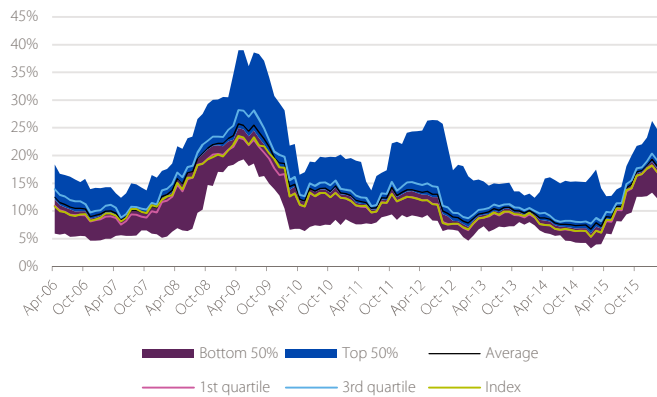
Asset class size & cashflows



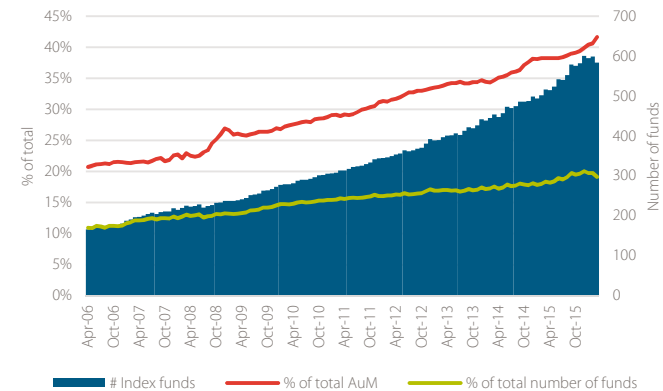
Return dispersion



Volatility dispersion



Share of index funds



US Large Cap Equity

Top 10

Current	Previous	Fund Name	Branding Name	ISIN	Gross Return (Ann.)		Standard Deviation	Historical ranking				
					3 Yr	5 Yr	3 Yr	# Rankings*	Q4 '15	Q3 '15	Q2 '15	Q1 '15
1	5	Pioneer Fds US Fundamental Gr N EUR ND	Pioneer Investments	LU0957296063	18.13	17.90	12.51	8 / 20	5	6	9	-
2	1	MS INVF US Advantage I	Morgan Stanley	LU0225741247	19.51	18.88	15.22	11 / 20	1	7	-	10
3	-	iShares DJ US Select Dividend (DE)	iShares	DE000A0D8Q49	16.32	17.30	10.74	8 / 20	-	-	-	-
4	2	AB FCP I American Growth I	AB (AllianceBernstein)	LU0079475348	21.82	18.77	13.23	5 / 20	2	1	1	3
5	-	Vanguard S&P 500 ETF	Vanguard	IE00B3XXRP09	16.00	-	11.97	3 / 20	-	5	5	-
6	10	iShares Core S&P 500	iShares	IE00B5BMR087	15.96	16.20	11.97	8 / 20	10	4	6	6
7	3	W.P. Stewart Holdings	AB (AllianceBernstein)	LU0237485098	19.39	21.44	13.05	20 / 20	3	2	3	7
8	6	Lyxor S&P 500 ETF D-EUR	Lyxor	LU0496786574	16.18	16.30	11.97	9 / 20	6	-	-	-
9	-	SPDR® S&P US Dividend Aristocrats ETF	State Street	IE00B6YX5D40	16.79	-	11.33	1 / 20	-	-	-	-
10	7	Natixis Actions US Growth I USD	Natixis	FR0010256404	19.73	19.64	13.41	2 / 20	7	-	-	-

Eligibility criteria asset class

Investment strategy

- Minimum 70% invested in North American Equity
- Large Cap or All Cap Equity strategy
- No exclusions of or focus on specific sectors or countries

Investment vehicle

- ETFs and Open-ended investment funds (Publicly offered)
- EUR or USD shareclass
- Minimum of EUR 50 million AuM
- Retail shareclass

Trackrecord

- Minimum 3 year trackrecord

Data

- Public reporting of fund data

* The '# Rankings' column indicates the number of AF Advisors Top 10 Mutual Fund Rankings in which the fund received a top-10 ranking.



European Large Cap Equity

Asset class

AF

Advisors

Asset class benchmark

MSCI Europe NR EUR

Funds

Total number of funds
2,076 (▲ 0.7%)

Number of funds registered for
sale in the Netherlands
429 (20.7% of total) (▲ 0.3%)

Number of funds domiciled in the
Netherlands
18 (0.9% of total) (▲ 0.1%)

Concentration

Top 10 largest asset managers %
of total AuM
43% (▼ 1.9%)

Top 10% largest funds % of total
AuM
66.1% (▼ 0.9%)

Average fund size (EUR mln)
291.2 (▼ 8.5%)

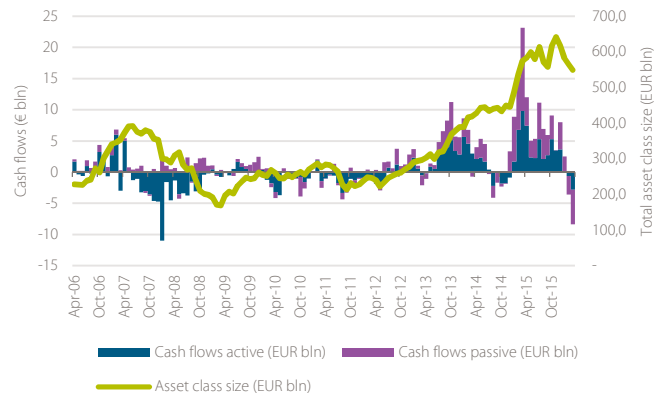
Costs

Average total expense ratio (TER)
1.17% (▼ 0.15%)

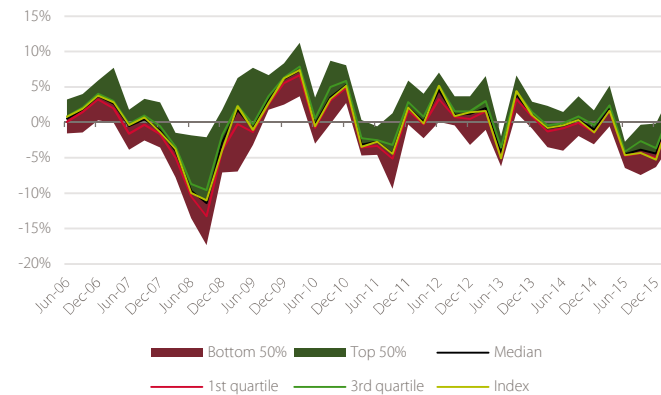
Average management fee
0.92% (▼ 0.08%)

Data as of 31/03/2016

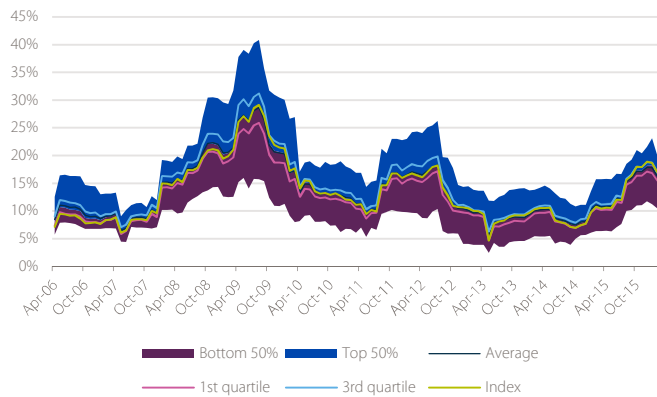
Asset class size & cashflows



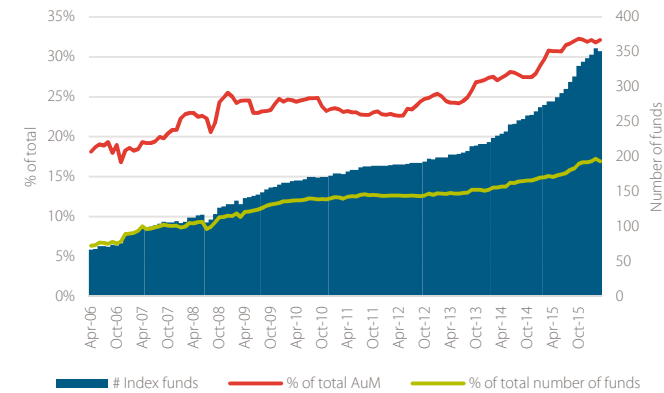
Return dispersion



Volatility dispersion



Share of index funds



AF

Advisors

European Large Cap Equity

Top 10

Current	Previous	Fund Name	Branding Name	ISIN	Gross Return (Ann.)		Standard Deviation	Historical ranking				
					3 Yr	5 Yr	3 Yr	# Rankings*	Q4 '15	Q3 '15	Q2 '15	Q1 '15
1	5	SSgA Europe Managed Volatility Eq I	State Street	LU0456116804	12.80	12.18	10.69	3 / 20	5	10	-	-
2	4	Invesco Pan Eurp Structured Eq C	Invesco	LU0119753134	12.99	13.48	12.23	17 / 20	4	2	10	3
3	1	UBS (Lux) ES Eurp Opp Uncons € Q	UBS	LU0848002365	13.28	15.50	12.82	12 / 20	1	1	5	2
4	2	JPM Europe Strategic Growth C (acc) EUR	JPMorgan	LU0129443577	16.56	13.59	12.98	7 / 20	2	3	1	1
5	-	iShares MSCI Europe Minimum Volatility	iShares	IE00B86MWN23	11.35	-	11.31	1 / 20	-	-	-	-
6	-	Robeco European Cnsvr Eqs C	Robeco	LU0792910134	12.07	10.88	11.07	5 / 20	-	-	-	-
7	3	BGF European Special Situations D2	BlackRock	LU0252965834	13.11	13.65	12.48	19 / 20	3	4	3	6
8	-	Fidelity European Dynamic Grth Y-Acc-EUR	Fidelity	LU0318940003	12.05	13.49	12.56	7 / 20	-	-	-	-
9	7	Adelphi European Select Equity D EUR	Adelphi	IE00B65NG183	14.76	13.72	11.63	2 / 20	7	-	-	-
10	6	Invesco Pan European Eq Income C	Invesco	LU0267986395	13.76	12.70	13.04	7 / 20	6	5	8	8

Eligibility criteria asset class

Investment strategy

- Minimum 70% invested in European Equity
- Large Cap or All Cap Equity strategy
- No exclusions of or focus on specific sectors or countries

Investment vehicle

- ETFs and Open-ended investment funds (Publicly offered)
- EUR shareclass
- Minimum of EUR 50 million AuM
- Retail shareclass

Trackrecord

- Minimum 3 year trackrecord

Data

- Public reporting of fund data

* The '# Rankings' column indicates the number of AF Advisors Top 10 Mutual Fund Rankings in which the fund received a top-10 ranking.

European Small & Mid Cap Equity

Asset class



Asset class benchmark

MSCI Europe SMID NR EUR

Funds

Total number of funds
528 (▲ 1.5%)

Number of funds registered for sale in the Netherlands
130 (24.6% of total) (▲ 0.2%)

Number of funds domiciled in the Netherlands
13 (2.5% of total) (▲ 0.2%)

Concentration

Top 10 largest asset managers % of total AuM
34.8% (▲ 1%)

Top 10% largest funds % of total AuM
55.6% (▼ 0.2%)

Average fund size (EUR mln)
186 (▼ 3.6%)

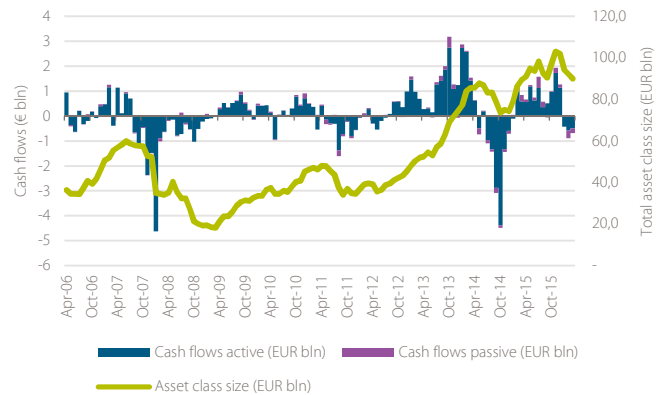
Costs

Average total expense ratio (TER)
1.50% (▼ 0.11%)

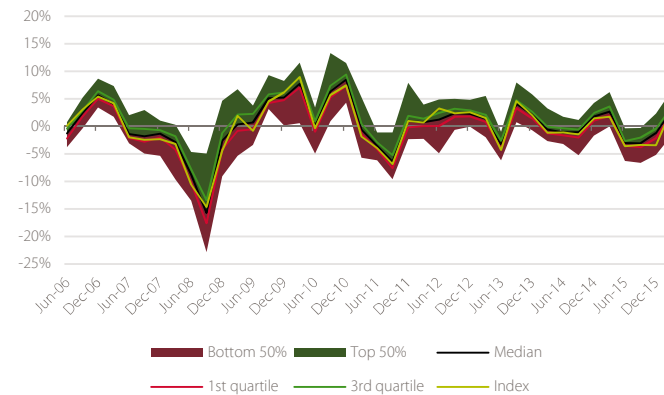
Average management fee
1.11% (▼ 0.03%)

Data as of 31/03/2016

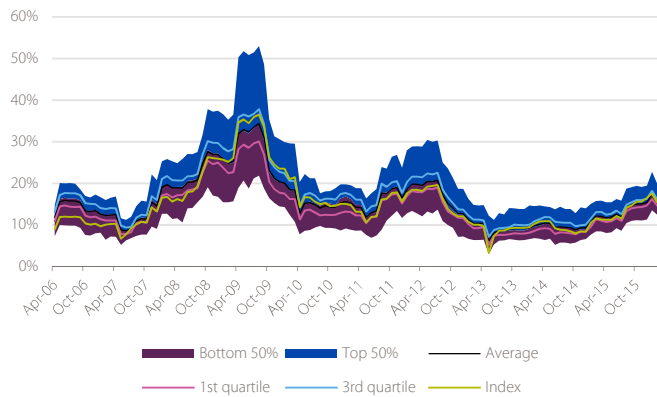
Asset class size & cashflows



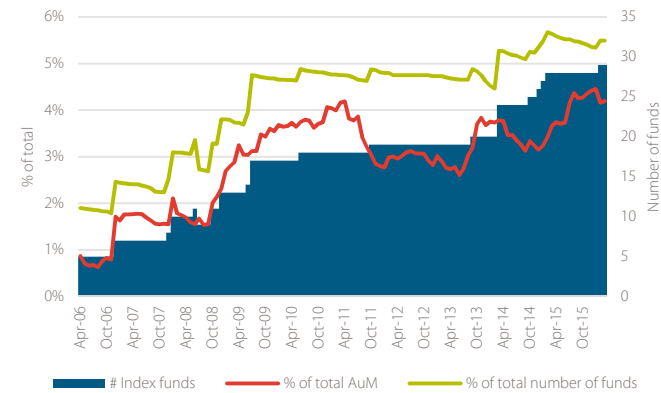
Return dispersion



Volatility dispersion



Share of index funds



European Small & Mid Cap Equity

Top 10

AF

Advisors

Current	Previous	Fund Name	Branding Name	ISIN	Gross Return (Ann.)		Standard Deviation	Historical ranking				
					3 Yr	5 Yr	3 Yr	# Rankings*	Q4 '15	Q3 '15	Q2 '15	Q1 '15
1	1	SLI European Smaller Coms D Acc	Standard Life	LU0306632687	23.26	17.78	12.46	3 / 20	1	6	-	-
2	6	Parvest Equity Europe Small Cap P C	BNP Paribas	LU0212180813	18.73	17.29	12.79	8 / 20	6	1	3	1
3	-	Threadneedle Eurp Sm Cos Ret Z EUR Acc	Columbia Threadneedle	GB00B96Q7B45	15.08	15.17	11.44	4 / 20	-	-	-	-
4	8	MFS Meridian Europ Sm Cos A1 EUR Acc	MFS	LU0125944966	16.14	17.58	10.30	13 / 20	8	4	-	-
5	-	Alken Small Cap Europe R	Alken	LU0300834669	23.56	18.22	13.58	6 / 20	-	-	6	6
6	-	Henderson Gartmore Pan Euro Sm Cos H Acc	Henderson	LU0995140356	17.16	12.87	13.31	4 / 20	-	8	2	-
7	3	AXA WF Frm Europe Small Cap F-C EUR	AXA	LU0125743475	18.55	14.90	12.36	2 / 20	3	-	-	-
8	10	Pioneer Fds European Potential N EUR ND	Pioneer Investments	LU1043804928	15.89	13.58	13.14	5 / 20	10	3	1	3
9	5	Comgest Growth Mid-Caps Europe I EUR Acc	Comgest	IE00BHWQNP08	13.30	16.16	12.23	7 / 20	5	9	-	7
10	2	JPM Europe Small Cap C (acc) EUR	JPMorgan	LU0129456397	19.52	14.42	13.25	8 / 20	2	7	4	2

Eligibility criteria asset class

Investment strategy

- Minimum 70% invested in European Equity
- Small Cap or Mid Cap Equity strategy
- No exclusions of or focus on specific sectors or countries

Investment vehicle

- ETFs and Open-ended investment funds (Publicly offered)
- EUR or USD shareclass
- Minimum of EUR 50 million AuM
- Retail shareclass

Trackrecord

- Minimum 3 year trackrecord

Data

- Public reporting of fund data

* The '# Rankings' column indicates the number of AF Advisors Top 10 Mutual Fund Rankings in which the fund received a top-10 ranking.



Asia-Pacific ex Japan Large Cap Equity

Asset class



Asset class benchmark

MSCI AC Asia Pac Ex JPN NR USD

Funds

Total number of funds
859 (▼ 0.1%)

Number of funds registered for sale in the Netherlands
173 (20.1% of total) (■ 0.0%)

Number of funds domiciled in the Netherlands
0 (0.0% of total) (■ 0.0%)

Concentration

Top 10 largest asset managers % of total AuM
54.5% (▼ 2.3%)

Top 10% largest funds % of total AuM
70.8% (▼ 0.6%)

Average fund size (EUR mln)
189 (▼ 4.1%)

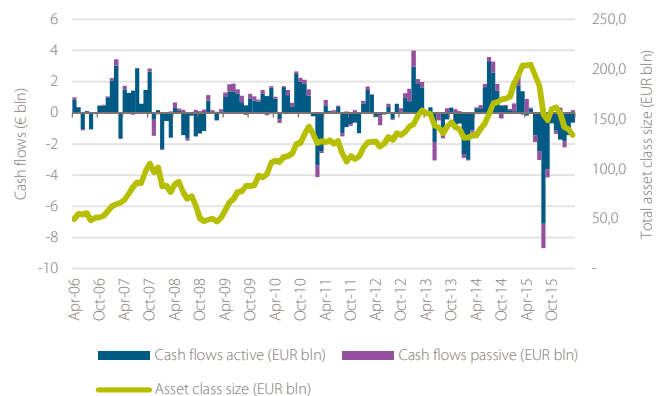
Costs

Average total expense ratio (TER)
1.23% (▼ 0.15%)

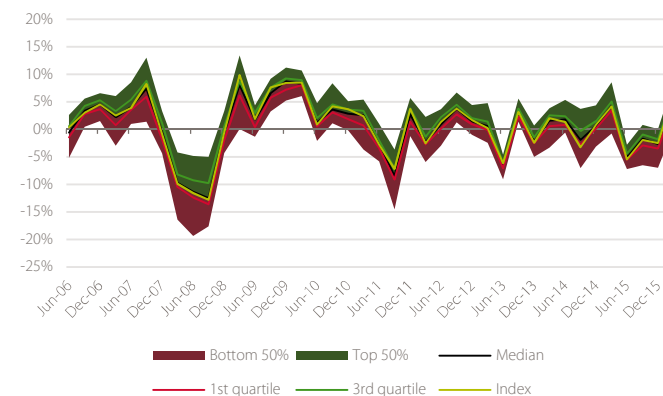
Average management fee
0.96% (▼ 0.15%)

Data as of 31/03/2016

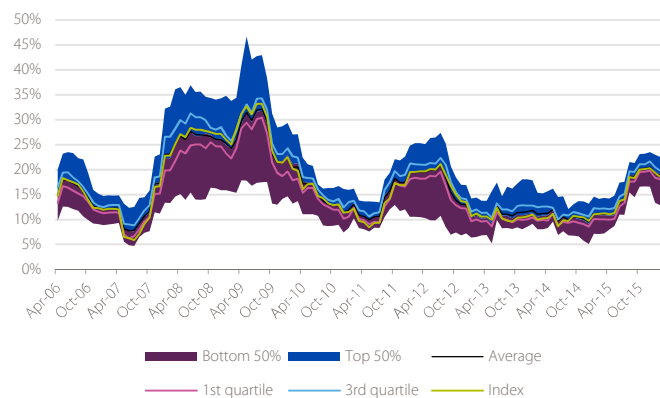
Asset class size & cashflows



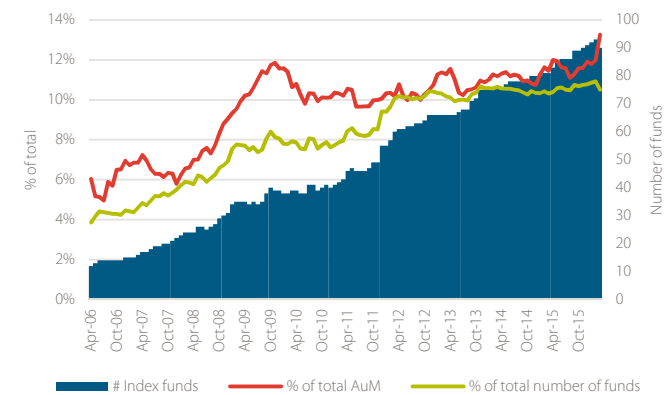
Return dispersion



Volatility dispersion



Share of index funds



Asia-Pacific ex Japan Large Cap Equity

Top 10

Current	Previous	Fund Name	Branding Name	ISIN	Gross Return (Ann.)		Standard Deviation	Historical ranking				
					3 Yr	5 Yr	3 Yr	# Rankings*	Q4 '15	Q3 '15	Q2 '15	Q1 '15
1	3	Stewart Invs Asa Pac Sstnby B Acc EUR	First State	GB00B2PDS698	12.07	14.32	13.04	18 / 20	3	1	3	4
2	1	Stewart Inv Asia Pac Ldrs B Acc EUR	First State	GB00B2PDRX95	9.17	11.36	13.57	13 / 20	1	2	1	3
3	9	Hermes Asia Ex Japan Equity F \$ Acc	Hermes Fund Managers	IE00B8H6X308	17.76	-	16.07	2 / 20	9	-	-	-
4	2	Comgest Growth Asia Pac ex Jpn I USD Acc	Comgest	IE00B5MQDC34	17.82	9.16	15.39	6 / 20	2	3	2	1
5	5	BGF Asian Growth Leaders D2	BlackRock	LU0859042482	13.92	-	16.55	2 / 20	5	-	-	-
6	4	Schroder ISF Asian Opp C EUR	Schroders	LU0248183658	6.66	9.78	14.08	6 / 20	4	7	5	2
7	-	JPMorgan ASEAN Equity C (acc) EUR	JPMorgan	LU0441853008	1.06	8.81	14.91	8 / 20	-	-	-	-
8	-	GS Asia Portfolio R Acc EUR	Goldman Sachs	LU0858287542	9.00	-	14.75	1 / 20	-	-	-	-
9	-	Robeco Asian Stars Equities F EUR Acc	Robeco	LU0940005217	6.07	8.65	15.66	8 / 20	-	6	6	9
10	6	Schroder ISF Asian Total Ret C	Schroders	LU0326949186	6.71	11.90	11.75	2 / 20	6	-	-	-

Eligibility criteria asset class

- Investment strategy**
 - Minimum 70% invested in Asia-Pacific ex Japan Equity
 - Large Cap or All Cap Equity strategy
 - No exclusions of or focus on specific sectors or countries
- Investment vehicle**
 - ETFs and Open-ended investment funds (Publicly offered)
 - EUR or USD shareclass
 - Minimum of EUR 50 million AuM
 - Retail shareclass
- Trackrecord**
 - Minimum 3 year trackrecord
- Data**
 - Public reporting of fund data

* The '# Rankings' column indicates the number of AF Advisors Top 10 Mutual Fund Rankings in which the fund received a top-10 ranking.



Japan Large Cap Equity

Asset class

Asset class benchmark

Topix TR JPY

Funds

Total number of funds
1,499 (▲ 2%)

Number of funds registered for
sale in the Netherlands
135 (9% of total) (■ 0.0%)

Number of funds domiciled in the
Netherlands
1 (0.1% of total) (■ 0.0%)

Concentration

Top 10 largest asset managers %
of total AuM
64.9% (▲ 0.3%)

Top 10% largest funds % of total
AuM
78.7% (▼ 0.2%)

Average fund size (EUR mln)
221 (▼ 9.4%)

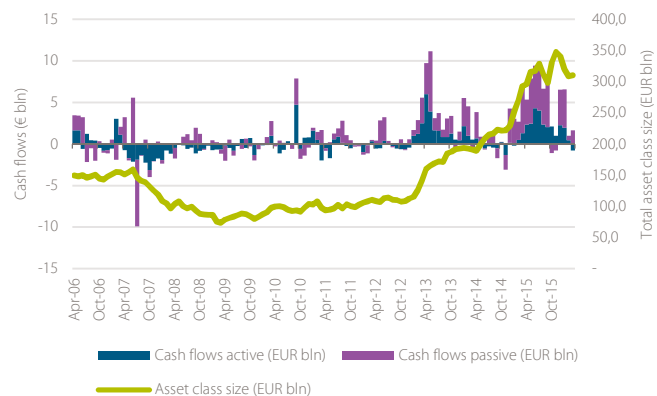
Costs

Average total expense ratio (TER)
1.02% (▼ 0.09%)

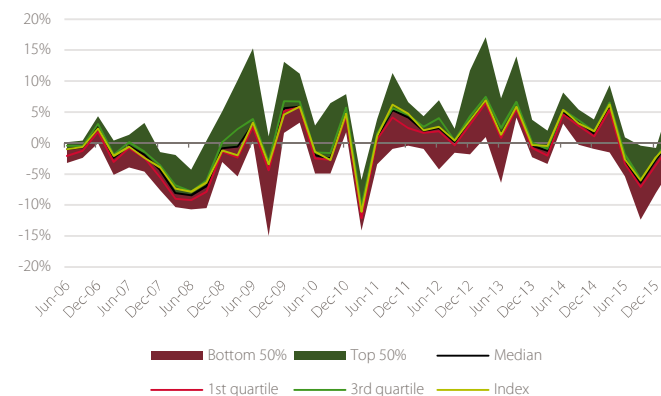
Average management fee
0.82% (■ 0.0%)

Data as of 31/03/2016

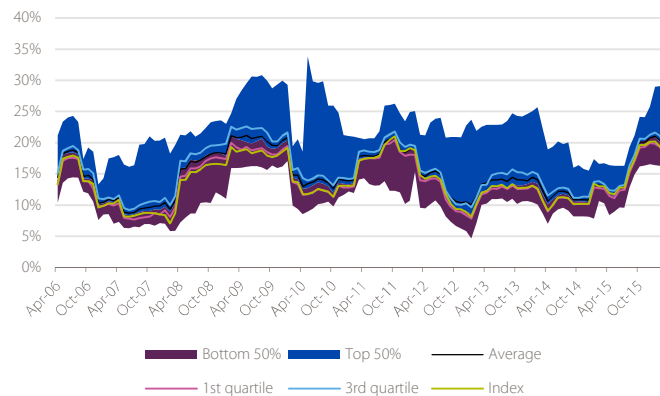
Asset class size & cashflows



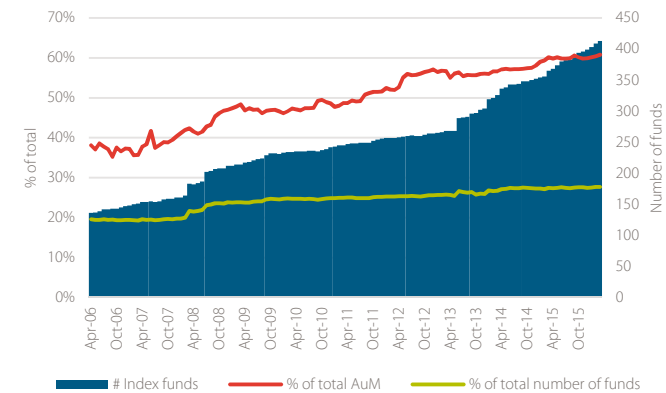
Return dispersion



Volatility dispersion



Share of index funds



Japan Large Cap Equity

Top 10

Current	Previous	Fund Name	Branding Name	ISIN	Gross Return (Ann.)		Standard Deviation	Historical ranking				
					3 Yr	5 Yr	3 Yr	# Rankings*	Q4 '15	Q3 '15	Q2 '15	Q1 '15
1	2	JPMorgan Japan Equity C (acc) USD	JPMorgan	LU0129464904	17.04	15.75	18.18	7 / 7	2	3	3	6
2	4	Comgest Growth Japan	Comgest	IE0004767087	20.22	17.81	15.61	2 / 7	4	-	-	-
3	5	Invesco Japanese Equity Advtg C JPY Acc	Invesco	LU0607514808	10.85	14.95	14.89	6 / 7	5	-	9	4
4	-	Uni-Global Equities Japan RA-JPY	Unigestion	LU0929189800	11.52	13.12	14.38	1 / 7	-	-	-	-
5	1	Schroder ISF Japanese Opp C	Schroders	LU0270819245	13.63	13.98	15.08	5 / 7	1	1	2	3
6	-	db x-trackers Nikkei 225 (DR) 1D	db X-trackers	LU0839027447	10.19	-	15.47	1 / 7	-	-	-	-
7	-	SLI Japanese Equities D Acc	Standard Life	LU0137295654	9.66	10.49	15.47	1 / 7	-	-	-	-
8	-	BlackRock ISF Japan Index EUR	BlackRock	IE00B39J2X56	8.10	8.78	15.27	1 / 7	-	-	-	-
9	6	iShares Nikkei 225	iShares	IE00B52MJD48	10.14	11.31	15.50	7 / 7	6	4	1	1
10	7	OYSTER Japan Opportunities R JPY PR	Oyster	LU0536295982	13.83	12.08	14.14	2 / 7	7	-	-	-

Eligibility criteria asset class

- Investment strategy**
 - Minimum 70% invested in Japan Equity
 - Large Cap or All Cap Equity strategy
 - No exclusions of or focus on specific sectors or countries
- Investment vehicle**
 - ETFs and Open-ended investment funds (Publicly offered)
 - EUR, JPY or USD shareclass
 - Minimum of EUR 50 million AuM
 - Retail shareclass
- Trackrecord**
 - Minimum 3 year trackrecord
- Data**
 - Public reporting of fund data

* The '# Rankings' column indicates the number of AF Advisors Top 10 Mutual Fund Rankings in which the fund received a top-10 ranking.



European Government Bonds

Asset class

AF
Advisors

Asset class benchmark

Barclays Euro Agg Govt TR EUR

Funds

Total number of funds
357 (▲ 0.0%)

Number of funds registered for sale in the Netherlands
112 (31.4% of total) (▲ 0.3%)

Number of funds domiciled in the Netherlands
15 (4.2% of total) (■ 0.0%)

Concentration

Top 10 largest asset managers % of total AuM
53.2% (▲ 2.9%)

Top 10% largest funds % of total AuM
56.8% (▲ 1%)

Average fund size (EUR mln)
291 (▼ 1.4%)

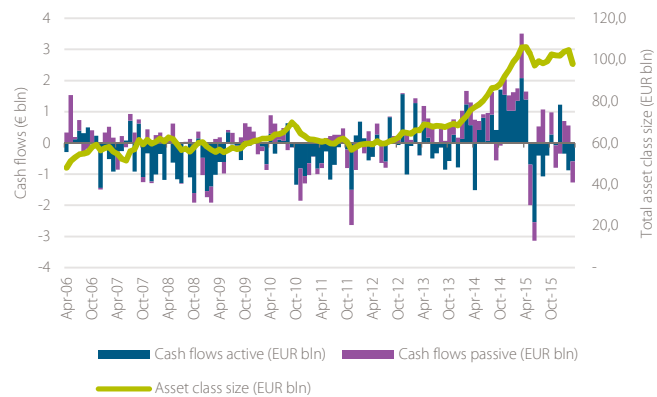
Costs

Average total expense ratio (TER)
0.43% (▼ 0.11%)

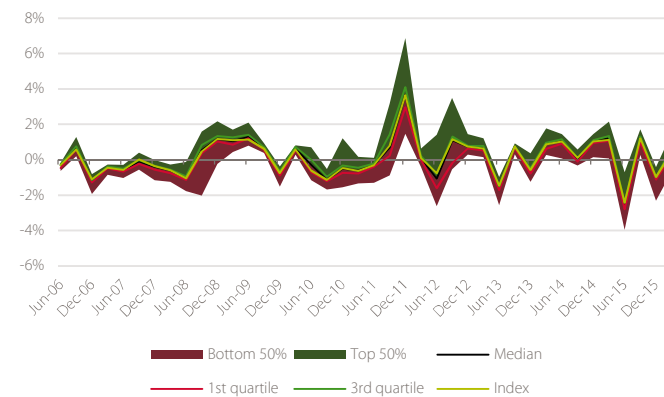
Average management fee
0.32% (▼ 0.04%)

Data as of 31/03/2016

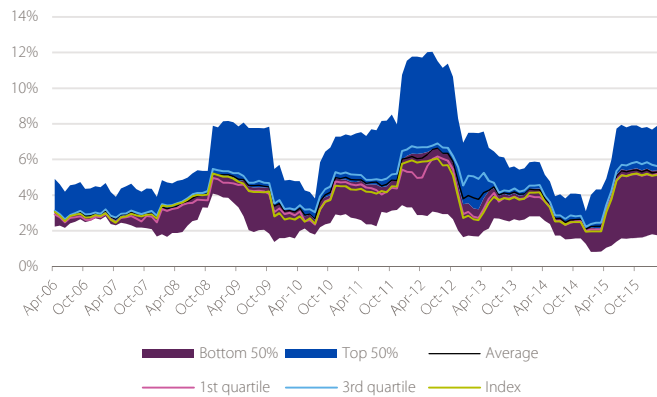
Asset class size & cashflows



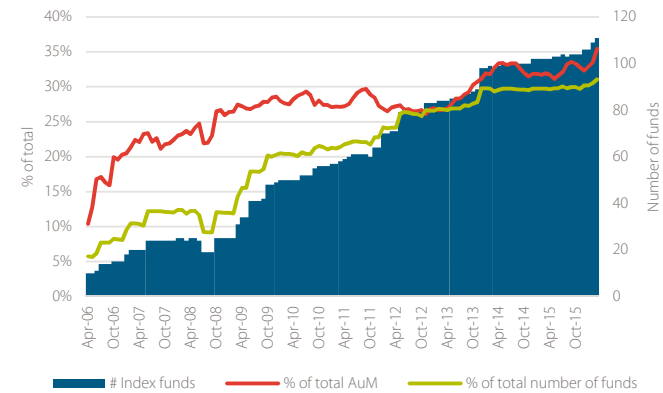
Return dispersion



Volatility dispersion



Share of index funds



European Government Bonds

Top 10

AF
Advisors

Current	Previous	Fund Name	Branding Name	ISIN	Gross Return (Ann.)		Standard Deviation	Historical ranking				
					3 Yr	5 Yr	3 Yr	# Rankings*	Q4 '15	Q3 '15	Q2 '15	Q1 '15
1	4	SPDR® Barclays Euro Government Bond ETF	State Street	IE00B355XW04	6.65	-	4.27	4 / 20	4	4	-	-
2	2	Amundi ETF GvtBd LR EuroMTS IG C	Amundi	FR0010892190	8.57	7.84	5.08	4 / 20	2	2	-	-
3	3	Generali IS Euro Bond AY	Generali	LU0145475926	7.42	7.87	4.43	9 / 20	3	3	3	6
4	7	Amundi ETF GvtBd EuroMTS Broad Inv Grd	Amundi	FR0010754192	6.73	6.97	4.44	10 / 20	7	6	-	-
5	8	Think iBoxx Government Bond ETF	Think ETFs	NL0009690254	6.03	7.15	3.59	9 / 20	8	9	6	7
6	1	db x-trackers II iBoxx SovEuZ Yld+1C	db X-trackers	LU0524480265	9.10	8.41	4.92	6 / 20	1	1	4	3
7	-	BNPP Easy Mkt iBoxx € Liquid Soverg ETF	BNP Paribas	FR0010276949	6.93	7.06	4.54	13 / 20	-	7	-	5
8	6	Deutsche Invest I Euro-Gov Bonds FC	Deutsche Asset Management	LU0145654009	7.67	7.96	4.67	8 / 20	6	8	2	9
9	-	Schroder ISF Euro Govt Bd C Acc	Schroders	LU0106236184	6.91	7.54	4.25	7 / 20	-	5	7	10
10	-	db x-trackers II iBoxx Sov Euroz 1C	db X-trackers	LU0290355717	6.58	7.11	4.29	8 / 20	-	-	-	-

Eligibility criteria asset class

Investment strategy

- Minimum 70% invested in European Government Bonds
- No exclusions of or focus on specific sectors, countries, ratings or maturities

Investment vehicle

- ETFs and Open-ended investment funds (Publicly offered)
- EUR shareclass
- Minimum of EUR 50 million AuM
- Retail shareclass

Trackrecord

- Minimum 3 year trackrecord

Data

- Public reporting of fund data

* The '# Rankings' column indicates the number of AF Advisors Top 10 Mutual Fund Rankings in which the fund received a top-10 ranking.



European Corporate Bonds

Asset class

AF
Advisors

Asset class benchmark

Barclays Euro Agg Corps TR EUR

Funds

Total number of funds
405 (▲ 2.5%)

Number of funds registered for
sale in the Netherlands
122 (30.1% of total) (▼ 0.3%)

Number of funds domiciled in the
Netherlands
8 (2% of total) (■ 0.0%)

Concentration

Top 10 largest asset managers %
of total AuM
44.1% (▼ 0.9%)

Top 10% largest funds % of total
AuM
58% (▲ 1.3%)

Average fund size (EUR mln)
357 (▲ 2.3%)

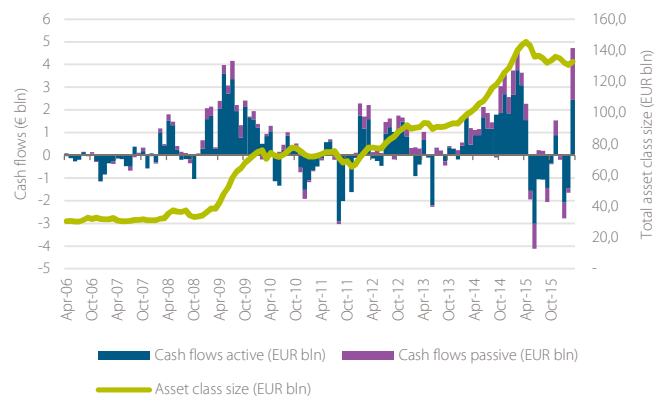
Costs

Average total expense ratio (TER)
0.66% (▼ 0.07%)

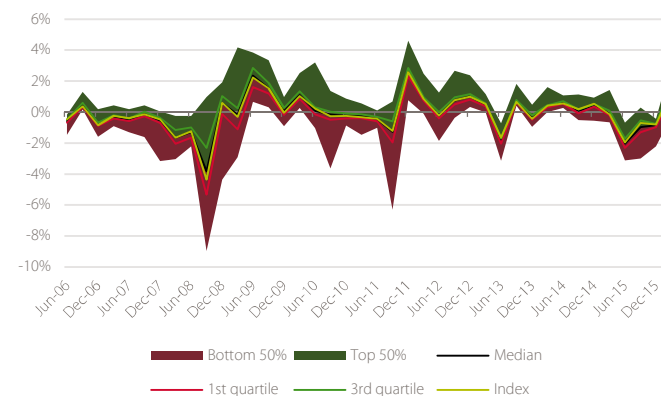
Average management fee
0.47% (▼ 0.05%)

Data as of 31/03/2016

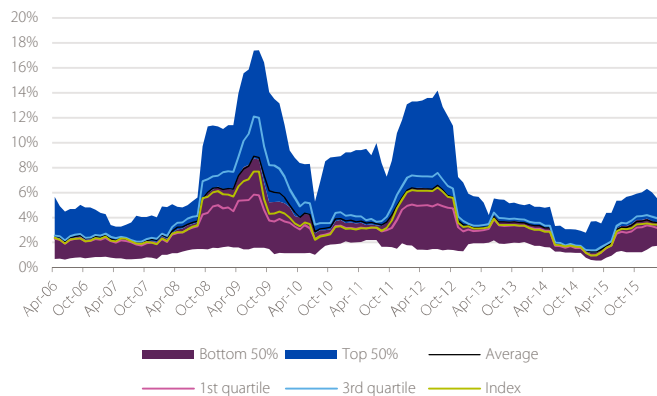
Asset class size & cashflows



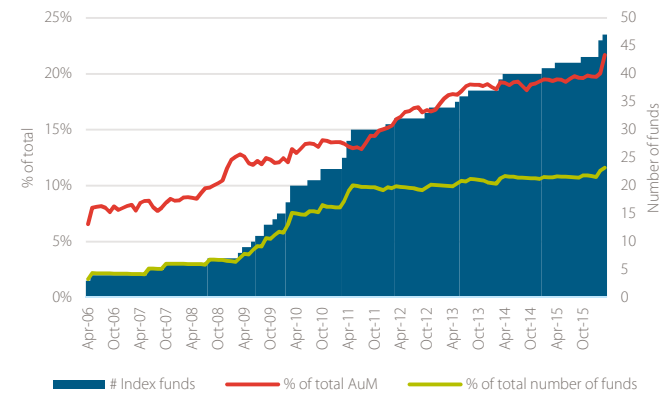
Return dispersion



Volatility dispersion



Share of index funds



European Corporate Bonds

Top 10

AF

Advisors

Current	Previous	Fund Name	Branding Name	ISIN	Gross Return (Ann.)		Standard Deviation	Historical ranking				
					3 Yr	5 Yr	3 Yr	# Rankings*	Q4 '15	Q3 '15	Q2 '15	Q1 '15
1	1	Kempen (Lux) Euro Credit BN EUR	Kempen	LU0927664382	4.91	6.70	3.00	20 / 20	1	1	1	1
2	2	Delta Lloyd Euro Credit	Delta Lloyd	NL0000286482	4.40	6.44	3.16	18 / 20	2	2	-	-
3	4	BGF Euro Corporate Bond D2	BlackRock	LU0368266499	5.03	6.51	3.04	3 / 20	4	-	-	-
4	7	SPDR® Barclays Euro Corporate Bond ETF	State Street	IE00B3T9LM79	4.05	-	2.90	7 / 20	7	8	9	6
5	-	BNY Mellon European Credit C EUR	BNY Mellon	IE00B5SGRP88	5.13	-	3.09	1 / 20	-	-	-	-
6	3	Schroder ISF Euro Corp Bd C	Schroders	LU0113258742	6.08	6.04	3.33	7 / 20	3	7	8	8
7	-	iShares Euro Corporate Bond Large Cap	iShares	IE0032523478	3.84	5.31	2.84	7 / 20	-	-	-	-
8	5	Vanguard Euro IG Bd Idx Inv EUR	Vanguard	IE0009591805	4.06	5.70	2.64	2 / 20	5	-	-	-
9	9	iShares Core Euro Corporate Bond	iShares	IE00B3F81R35	4.07	5.52	2.92	8 / 20	9	-	-	-
10	-	CapitalAtWork Corporate Bonds at Work C	CapitalatWork	LU0116513721	5.84	7.84	4.68	2 / 20	-	-	-	-

Eligibility criteria asset class

Investment strategy

- Minimum 70% invested in European Corporate Bonds
- No exclusions of or focus on specific sectors, countries, ratings or maturities

Investment vehicle

- ETFs and Open-ended investment funds (Publicly offered)
- EUR shareclass
- Minimum of EUR 50 million AuM
- Retail shareclass

Trackrecord

- Minimum 3 year trackrecord

Data

- Public reporting of fund data

* The '# Rankings' column indicates the number of AF Advisors Top 10 Mutual Fund Rankings in which the fund received a top-10 ranking.



Global High Yield Bonds

Asset class

AF

Advisors

Asset class benchmark

Barclays Global High Yield TR USD

Funds

Total number of funds
1,293 (▲ 0.3%)

Number of funds registered for sale in the Netherlands
184 (14.2% of total) (▲ 0.5%)

Number of funds domiciled in the Netherlands
4 (0.3% of total) (■ 0.0%)

Concentration

Top 10 largest asset managers % of total AuM
39% (▲ 1.2%)

Top 10% largest funds % of total AuM
73.8% (▲ 0.2%)

Average fund size (EUR mln)
450 (▼ 3.6%)

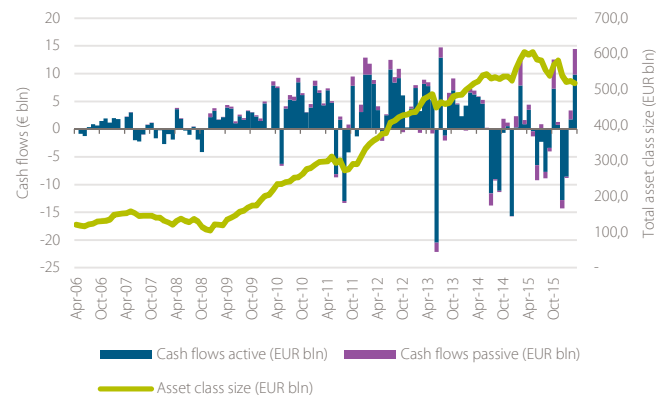
Costs

Average total expense ratio (TER)
1.03% (▼ 0.06%)

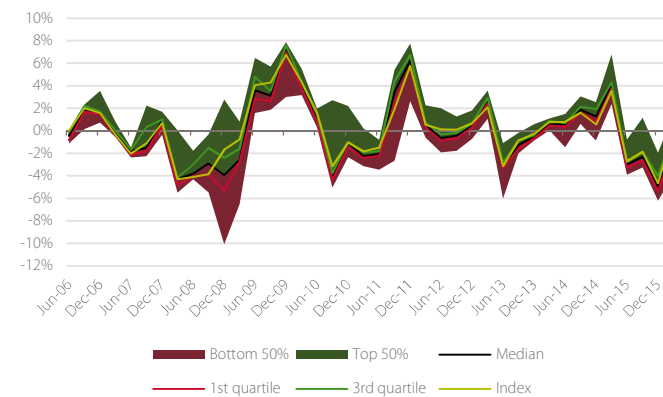
Average management fee
0.84% (▼ 0.05%)

Data as of 31/03/2016

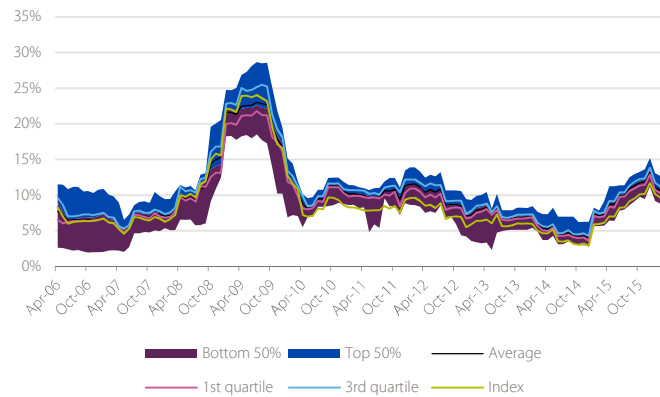
Asset class size & cashflows



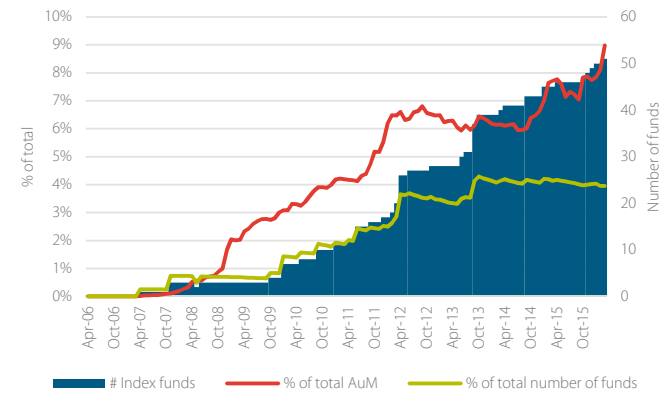
Return dispersion



Volatility dispersion



Share of index funds



Global High Yield Bonds

Top 10

Current	Previous	Fund Name	Branding Name	ISIN	Gross Return (Ann.)		Standard Deviation	Historical ranking				
					3 Yr	5 Yr	3 Yr	# Rankings*	Q4 '15	Q3 '15	Q2 '15	Q1 '15
1	1	UBAM Global High Yield Solu AC Acc	UBP	LU0569862351	11.81	12.97	8.51	5 / 7	1	2	4	6
2	4	PIMCO GIS Global Hi Yld Bd Ins USD Acc	PIMCO	IE0002420739	7.81	10.70	8.66	7 / 7	4	6	5	3
3	2	Babson Capital Gbl HY Bd F USD Acc	Babson Capital	IE00B701NP71	10.90	-	8.46	2 / 7	2	-	-	-
4	6	Robeco High Yield Bonds DH USD	Robeco	LU0594695099	9.68	11.93	8.91	4 / 7	6	8	9	-
5	5	Kames High Yield Global Bond B USD Inc	Kames Capital	IE00B296WW80	8.76	11.66	8.78	6 / 7	5	3	1	4
6	7	Threadneedle High Yld Bd Ret Net	Columbia Threadneedle	GB0008371014	8.54	9.81	8.92	3 / 7	7	10	-	-
7	3	AXA WF Gbl High Yield Bonds F-C USD	AXA	LU0184631215	7.04	10.46	8.77	7 / 7	3	1	3	2
8	-	M&G Global High Yield Bd USD C-H Acc	M&G	GB00B62CB465	8.80	11.31	9.33	3 / 7	-	-	7	5
9	9	JPM Global High Yield Bd C (acc) USD	JPMorgan	LU0344579213	6.37	10.06	8.56	5 / 7	9	-	-	8
10	-	BGF Global High Yield Bond D2	BlackRock	LU0297941899	6.88	10.03	8.87	6 / 7	-	5	8	7

Eligibility criteria asset class

Investment strategy

- Minimum 70% invested in Global High Yield Bonds
- No exclusions of or focus on specific sectors, countries, ratings or maturities

Investment vehicle

- ETFs and Open-ended investment funds (Publicly offered)
- EUR or USD shareclass
- Minimum of EUR 50 million AuM
- Retail shareclass

Trackrecord

- Minimum 3 year trackrecord

Data

- Public reporting of fund data

* The '# Rankings' column indicates the number of AF Advisors Top 10 Mutual Fund Rankings in which the fund received a top-10 ranking.



Introducing AF Advisors

AF Advisors is a leading consulting boutique that services the investment industry by combining deep industry knowledge and expertise with a practical, multi-disciplinary approach.

We support our clients in the areas of investment structuring, product management, operations, regulatory implementation and organizational consulting.

Our specific experience and expertise enable us to fully support our clients from start to finish across a broad range of initiatives including strategic and tactical projects.

AF Advisors Analysis Team

Guido Corbeau
g.corbeau@af-advisors.nl



Ján Micenko
j.micenko@af-advisors.nl



Martin Schaaphok
m.schaaphok@af-advisors.nl



AF Advisors
Westersingel 91
3015 LC Rotterdam
The Netherlands
www.af-advisors.nl
+31 10 412 9616



Approach



We believe consulting involves more than simply leaving our clients with jargon-riddled reports - we deliver solutions that work! Our **no-nonsense, hands-on approach** we work with our clients to ensure that advice will not remain merely a theoretical exercise, but is successfully implemented to maximize potential value for our clients.



The issues our clients face rarely affect just one specific area of expertise and therefore **require a multi-disciplinary approach**. Our consultants have experience in most disciplines and are able to bring a holistic approach to their assignment. The role we serve varies depending on our clients' needs.



Our consultants are experts in their areas and are capable of putting themselves in our clients' shoes, as all of our people have a background in the industry beyond consulting. This expertise allows us to bring **a deep understanding and fresh perspective** to the challenges our clients face. Our project teams emphasize partner involvement in order to achieve positive client outcomes.



Disclaimer

The information in this publication is derived from sources considered to be reliable. AF Advisors assumes no responsibility for the accuracy and completeness of the facts, opinions and expectations it contains, or their consequences.

While we have taken every possible care in selecting the information in this publication, we accept no responsibility for any damage resulting from incorrect or incomplete data.

This report is made without consideration of any specific clients investment objectives, financial situation or particular needs. It does not constitute advice and you should not rely on the content of this document to make (or refrain from making) any decision or take (or refrain from taking) any action.

The information contained herein is proprietary to AF Advisors and/or its content providers and may not be copied or distributed without prior written consent.

